

PLAZA MIDWOOD  
**COMMONWEALTH**  
CHARLOTTE, NC



WATCH THE VIDEO

RETAIL



UPTOWN  
CHARLOTTE

VINTAGE #2

VINTAGE #1

OFFICE BUILDING  
RETAIL

MULTIFAMILY  
RETAIL

SINGLE  
LEVEL  
RETAIL

MAIN STREET

# COMMONWEALTH

TWO PARTS VINTAGE, ONE PART NEXT BIG THING.

12 ACRE

100K SF

250K SF

383

AMPLE

MIXED-USE  
DEVELOPMENT

RETAIL

OFFICE  
PHASE 1 + 2

RESIDENCES

MIXED-USE  
DEVELOPMENT

## LOCATION

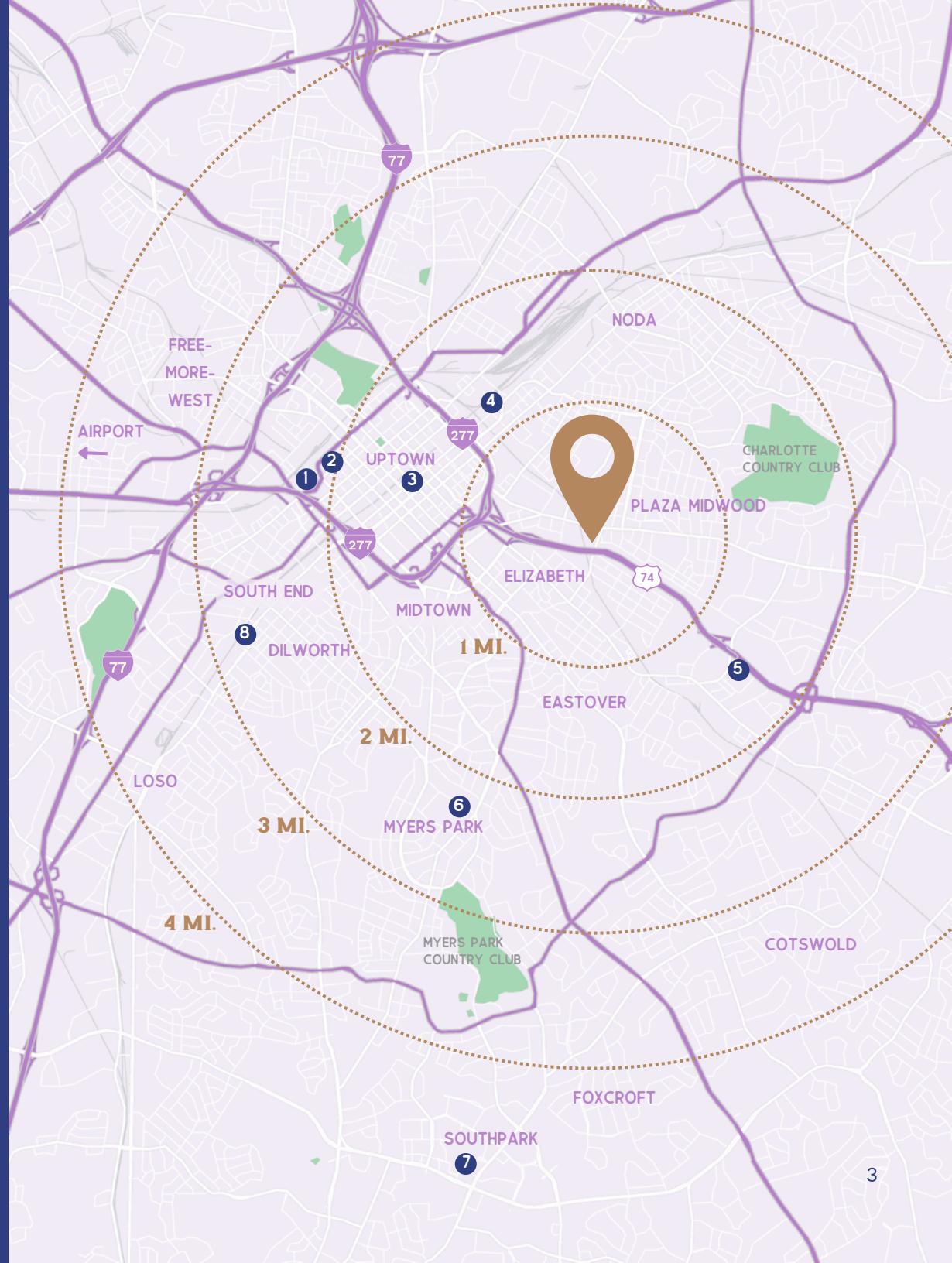
LOCATED JUST 1 MILE TO THE SOUTHEAST OF UPTOWN CHARLOTTE. COMMONWEALTH IS LOCATED IN THE HEART OF THE PLAZA MIDWOOD NEIGHBORHOOD.

## CHARLOTTE LANDMARKS

- |                            |                       |
|----------------------------|-----------------------|
| 1. BANK OF AMERICA STADIUM | 5. BOJANGLES COLISEUM |
| 2. TRUIST FIELD            | 6. QUEENS UNIVERSITY  |
| 3. SPECTRUM CENTER         | 7. SOUTHPARK MALL     |
| 4. OPTIMIST HALL           | 8. ATHERTON MILL      |

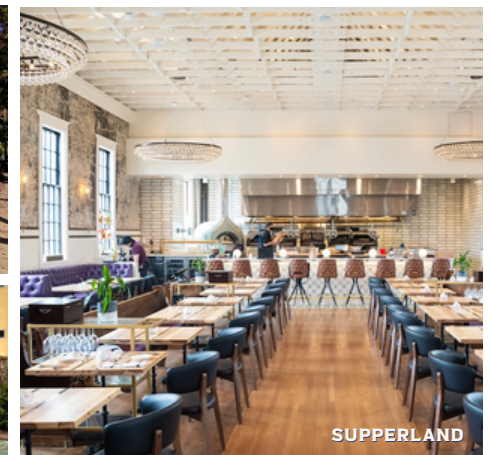
## TRAVEL TIMES

ELIZABETH	2 MINUTES
MIDTOWN	4 MINUTES
UPTOWN	5 MINUTES
EASTOVER	6 MINUTES
MYERS PARK	7 MINUTES
DILWORTH	10 MINUTES
SOUTH END	10 MINUTES
COTSWOLD	10 MINUTES
FOXCROFT	14 MINUTES
SOUTHPARK	15 MINUTES
AIRPORT	19 MINUTES



# WELCOME TO PLAZA MIDWOOD

- URBAN WALKABLE COMMUNITY
- HOME TO CHARLOTTE'S FIRST SOCIAL DISTRICT
- CHARLOTTE COUNTRY CLUB  
2 miles from commonwealth
- DENSE MULTIFAMILY  
3,174 units within 1 mile  
29,839 units within 3 miles



## DEMOGRAPHICS

	1 MILE	3 MILE	5 MILE
EST. POPULATION	17,104	133,079	298,988
EST. HOUSEHOLDS	8,496	65,855	134,263
AVG. HH INCOME	\$145,018	\$142,109	\$126,959
AVG. HH SIZE	2.0	2.0	2.2
MEDIAN HOME VALUE	\$489,624	\$471,074	\$430,057
MEDIAN AGE	33.0	33.7	34.9
# OF BUSINESSES	1,420	11,601	21,584
DAYTIME POPULATION	14,862	117,853	209,277

# PLAZA MIDWOOD HAS ATTRACTED MANY OF CHARLOTTE'S BEST LOCAL RESTAURANTEURS

**FS FOOD GROUP**



**Calle Sol** Latin Café & Cevicheria Plaza Midwood (2021)

**LITTLE Mama's** SouthPark (2020)

**YAFO** Kitchen Plaza Midwood (2018), Dilworth (2018), SouthPark (2016)

**MIDWOOD SMOKEHOUSE** Plaza Midwood (2011), Park Rd Shopping Center (2017)

**PACO'S TACOS & TEQUILA** SouthPark (2010)

**Mama Ricatta's** ITALIAN RESTAURANT Midtown (1992)

**TONIDANDEL - BROWN RESTAURANT GROUP**



**EVER ANDALO** NoDa (2022)

**SUPPERLAND** Plaza Midwood (2021)

**HABERDISH** NoDa (2016)

**GROWLERS POURHOUSE** NoDa (2010)

**1957 HOSPITALITY GROUP**



**puerta** Elizabeth (2023)

**Rosemont** MARKET & WINE BAR Elizabeth (2023)

**Cheat's** Plaza Midwood (2022)

**THE Crumpleton** Elizabeth (2018)

**JOE & KATY KINDRED**



**milkbread** Plaza Midwood (2022), Davidson (2022)

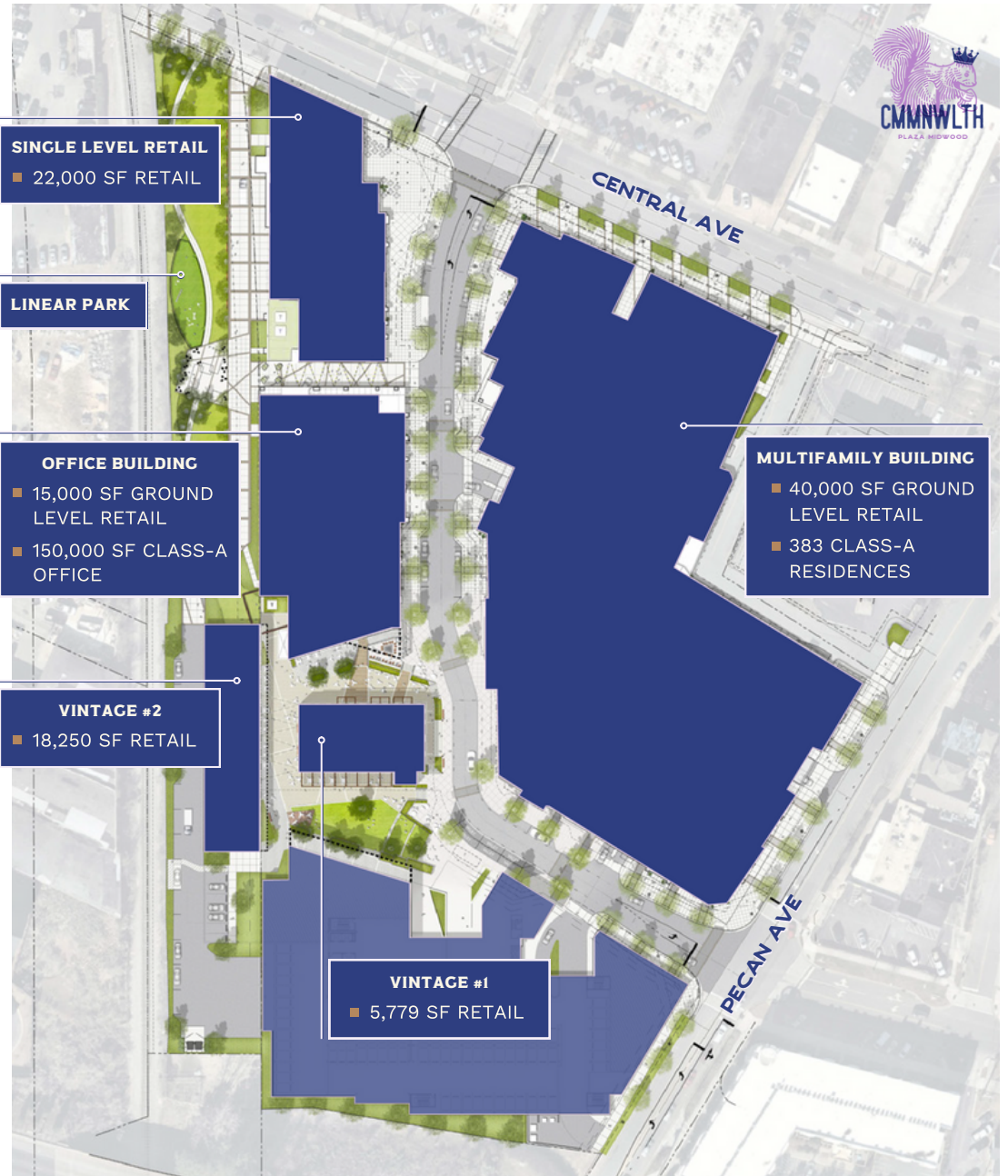
**HELLO, SAILOR** Davidson (2017)

**KINDRED** Davidson (2015)

# AREA MAP



# ABOUT THE PROJECT



# SITE PLAN

## GROUND LEVEL RETAIL - MULTIFAMILY BUILDING

SUITE	USF
1	2,675
2	1,601
3	1,401
4	1,546
5	3,342
6	1,005
7	2,052
8	1,095
9	1,539
10	1,212
11	1,373
12-13	3,022
14	2,347
15	3,407
16	1,659
17	2,400
18	1,354
19	929
20	2,457



## GROUND LEVEL RETAIL - OFFICE BUILDING

SUITE	USF
A	4,869
B	1,688
C	1,541
D	2,605
E	2,248

## SINGLE LEVEL RETAIL BUILDING

F	2,537
G	2,999
H	5,055
I	2,270
J	5,979





PLAZA MIDWOOD  
**COMMONWEALTH**  
CHARLOTTE, NC

GET IN TOUCH ▾



**CHARLES THRIFT**  
CHARLES@THRIFTCRES.COM  
704.622.1795

**LUCY BUTLER**  
LBUTLER@THRIFTCRES.COM  
704.420.3858

**PEYTON GEHRON**  
PEYTON@THRIFTCRES.COM  
704.650.0605



**nuveen**  
A TIAA Company

