

300 E. 36th Street

Charlotte, NC 28206



PROPERTY DETAILS ▾



6,791 SF
Retail Available



NoDa neighborhood



Ground floor of 294-unit
apartment building



Steps from 36th Street
Light Rail Station



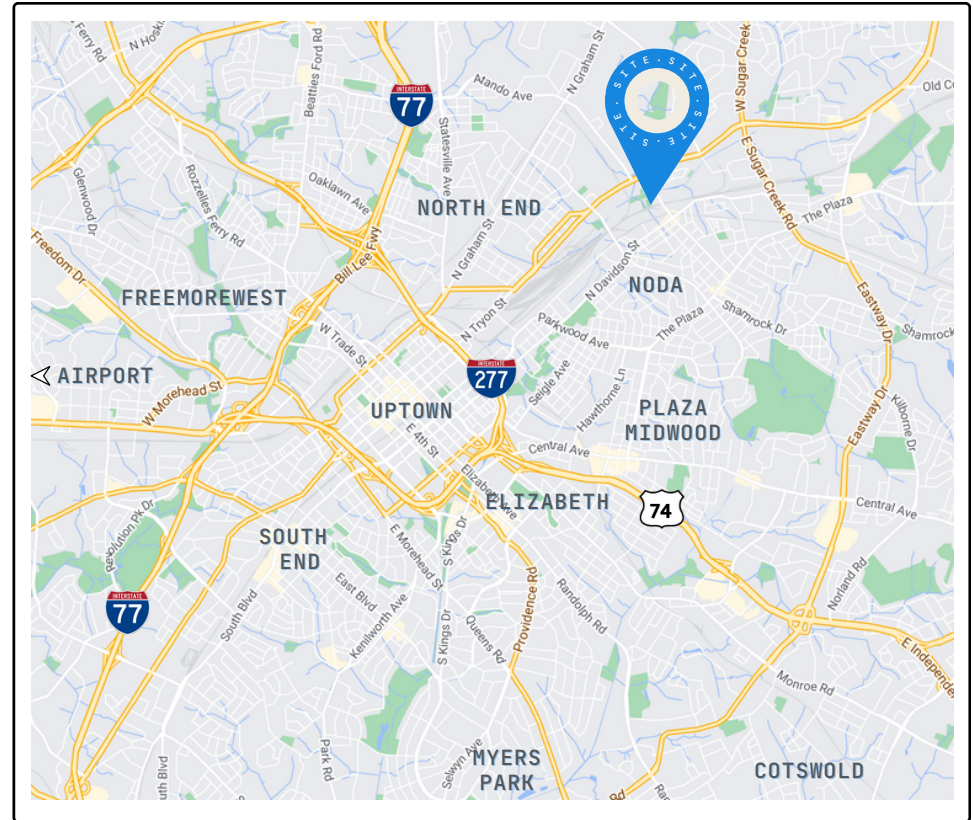
Double height ceilings



Planned Q3 2024 delivery



Patio opportunity + vented
for restaurant use

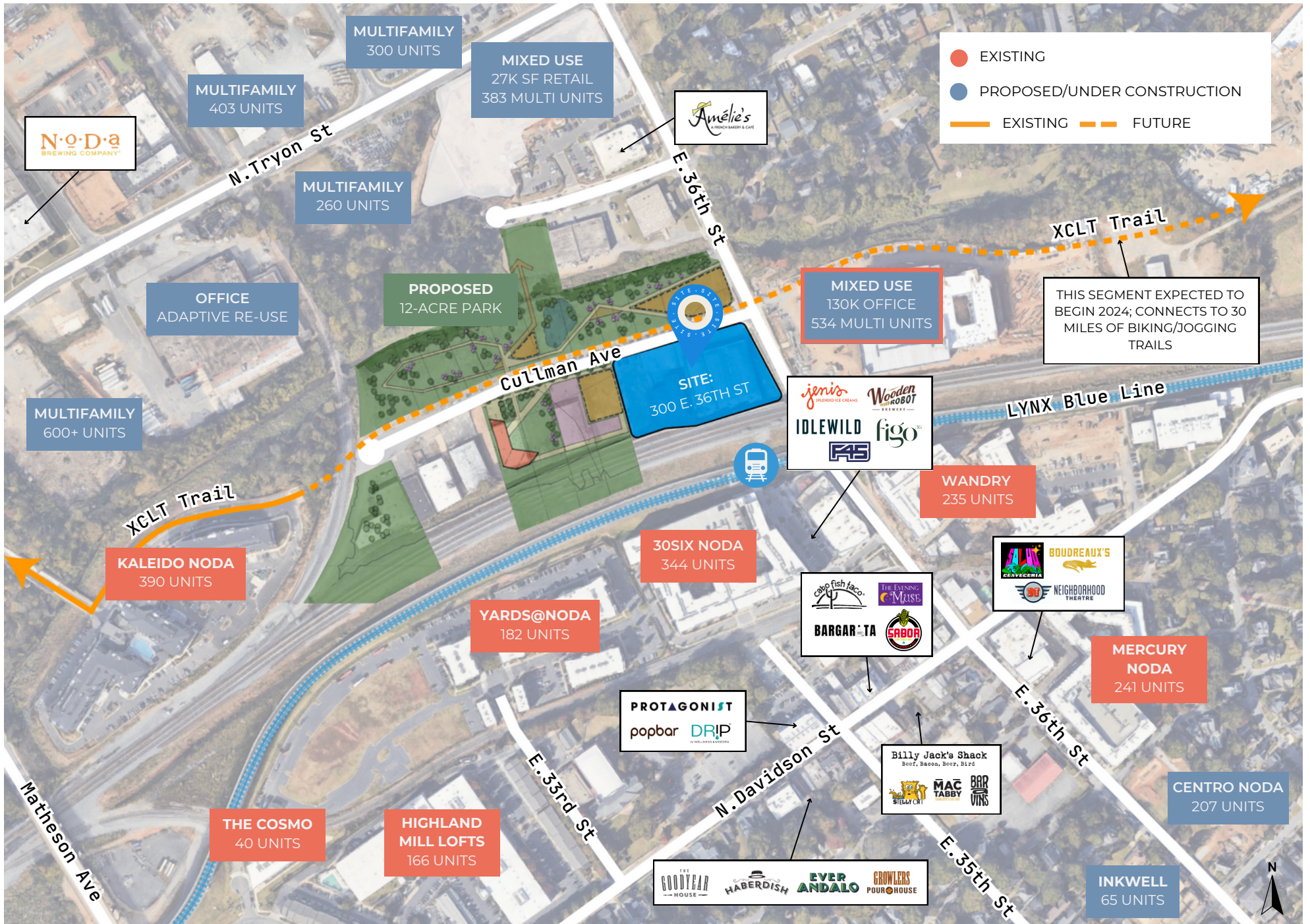


ORIENTATION MAP ▾



300 E. 36th Street, Charlotte, NC 28206

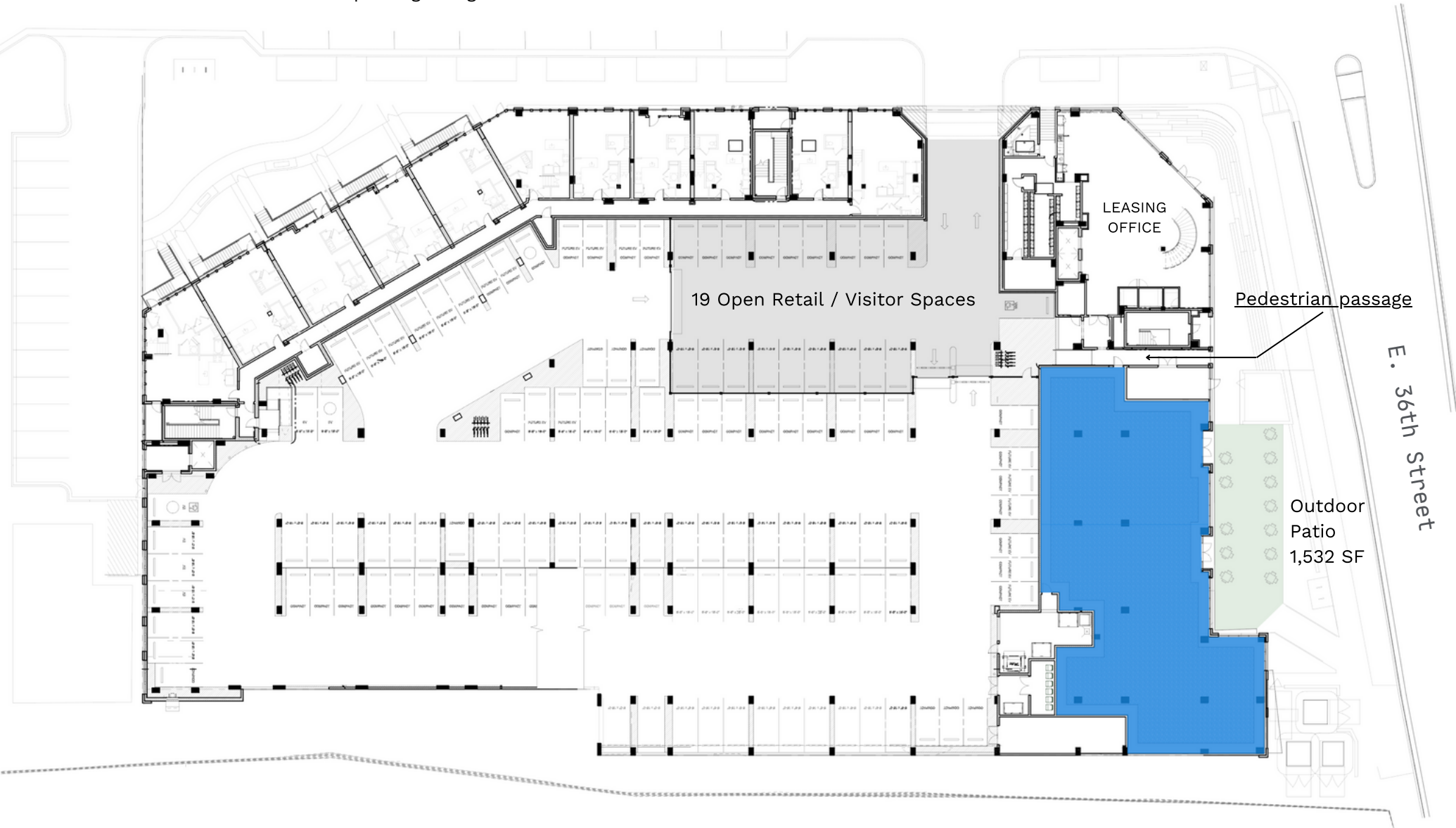
AREA MAP 



SITE MAP ▾

← On-street parking along Cullman Avenue

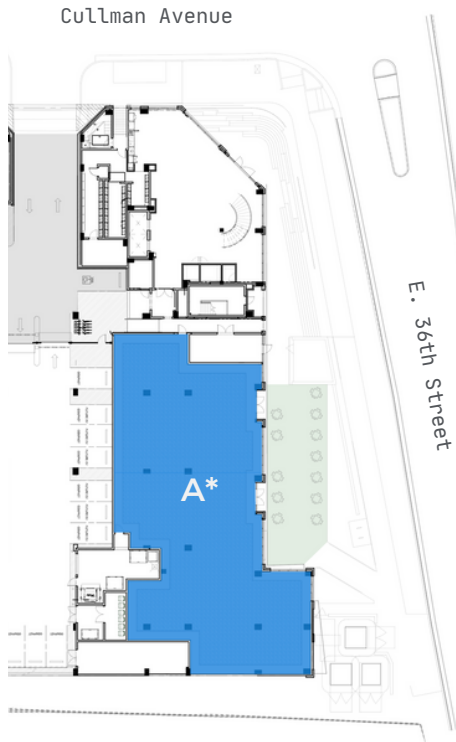
Cullman Avenue



● GROUND LEVEL RETAIL

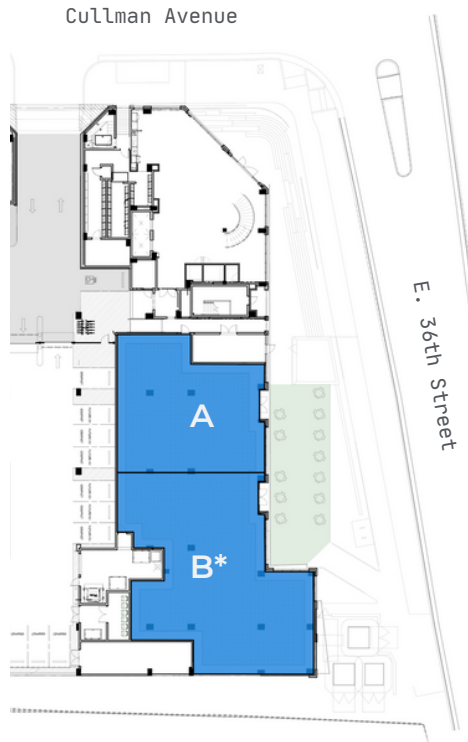
DEMISING OPTIONS

 GROUND LEVEL RETAIL



Single Tenant

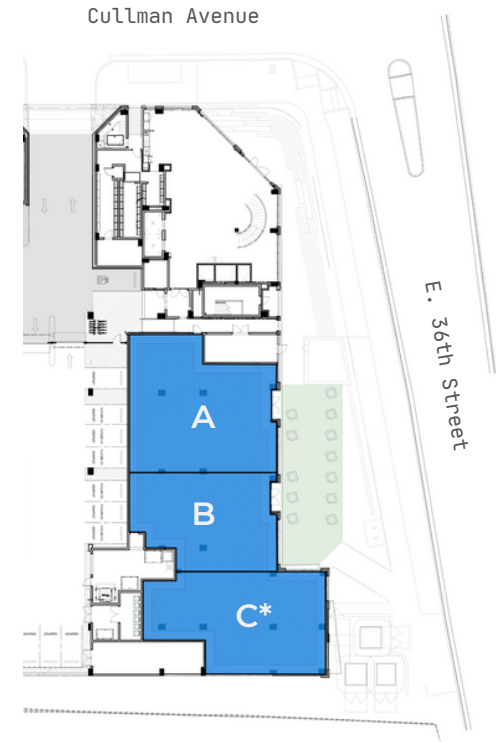
Suite A: 6,791 SF*



Two-Tenant

Suite A: 2,642 SF

Suite B: 4,149 SF*



Three-Tenant

Suite A: 2,642 SF

Suite B: 1,839 SF

Suite C: 2,310 SF*

*vented for restaurant use

CONSTRUCTION UPDATE ∨

04:01:2024





GET IN TOUCH ▾



300 E. 36th Street

Charlotte, NC 28206

Thompson Brock
Thompson@ThriftCRES.com
704-661-8576